

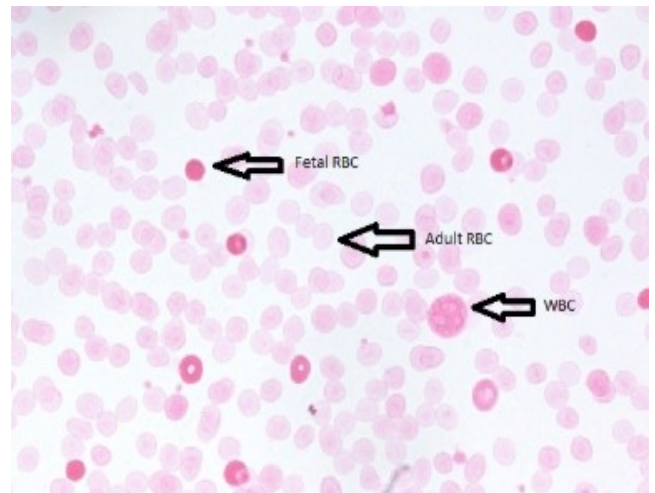
HEMATOLOGY TESTING UPDATE

CLARIFICATION REGARDING FETAL CELL DETECTION (KLEIHAUER STAIN) REPORTING CHANGE MADE EFFECTIVE NOVEMBER 7, 2019

On November 7, 2019, Wisconsin Diagnostic Laboratories changed Fetal Cell Detection (Kleihauer Stain) test result reporting by no longer reporting milliliters (mL) of fetal blood detected or RhIG requirements. We now only report the **percent fetal cells** in the sample.

A calculation is required to approximate the volume of fetal blood: $\% \text{ Fetal Cells} \times 50 = \text{mL of Fetal Blood}$ (assuming 5000 mL maternal blood volume). More accurate fetal blood volumes can be calculated with online calculators using maternal height and weight.

Please note that all positive results (percent fetal cells) are called to the provider and also to pharmacy. Pharmacy will then follow up with the RhIG requirements.



Historic Reporting	Current Reporting
Percent Fetal Cells	Percent Fetal Cells
mL of fetal blood detected	
RhIG requirements	

For Technical Questions or Additional Information, Please Contact:

- Alexandra Harrington, MD, MT(ASCP), Medical Director, Hematology and Coagulation, 414-805-6703, aharring@mcw.edu
- Maria Hintzke, MD, Associate Medical Director, Hematology, 414-805-4562, mhintzke@mcw.edu
- Chuck Schur, Manager, Hematology, Coagulation and Flow Cytometry, 414-805-5159, CSchur@wisconsindiagnostic.com

