

# TOXICOLOGY TESTING UPDATE

**EFFECTIVE JANUARY 29, 2020**

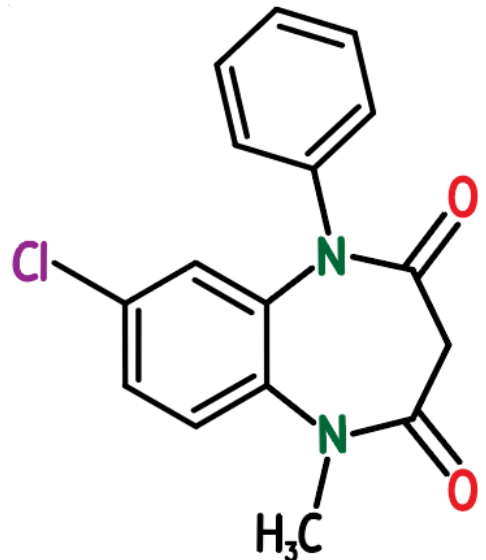
## CLOBAZAM & DESMETHYLCLOBAZAM TESTING UPDATES

**Effective January 29, 2020**, Wisconsin Diagnostic Laboratories (WDL) will begin in-house testing for the anti-epileptic drug Clobazam (Onfi) and its active metabolite Desmethyloclobazam.

Monitoring Clobazam and Desmethyloclobazam concentrations is helpful in optimizing therapy and minimizing potential drug toxicity. By performing testing at WDL, turnaround time will be reduced significantly. Our test schedule is Monday, Wednesday, and Friday, resulting in a standard turnaround time of 2 days and a maximum turnaround time of 3 days (for samples submitted Friday evening).

**Specimen requirements will remain the same:**

Specimen Type: Serum  
 Collection: Red-top tube (do not use SST)  
 Volume: 1.0 mL serum  
 Transport Temp: Room temperature



**Test Information:**

Test Name	Mnemonic	Test Code	Epic Code	CPT Code	Specimen Type
Clobazam (Onfi)	CLOBAZ	3555050	80154.009	80339	Serum collected in Red-top tube

**For Technical Questions or Additional Information, Please Contact:**

- Ian Gunsolus, PhD, Co-Director of Clinical Chemistry and Toxicology, 414.805.6972, [igunsolus@mcw.edu](mailto:igunsolus@mcw.edu)
- Laura Smy, PhD, MLS, Co-Director of Clinical Chemistry and Toxicology, 414.805-6975, [lsmy@mcw.edu](mailto:lsmy@mcw.edu)

